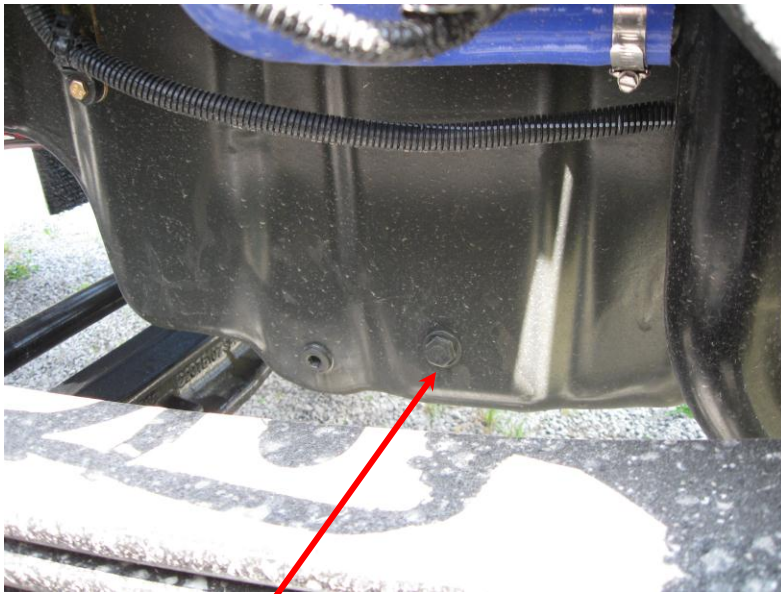
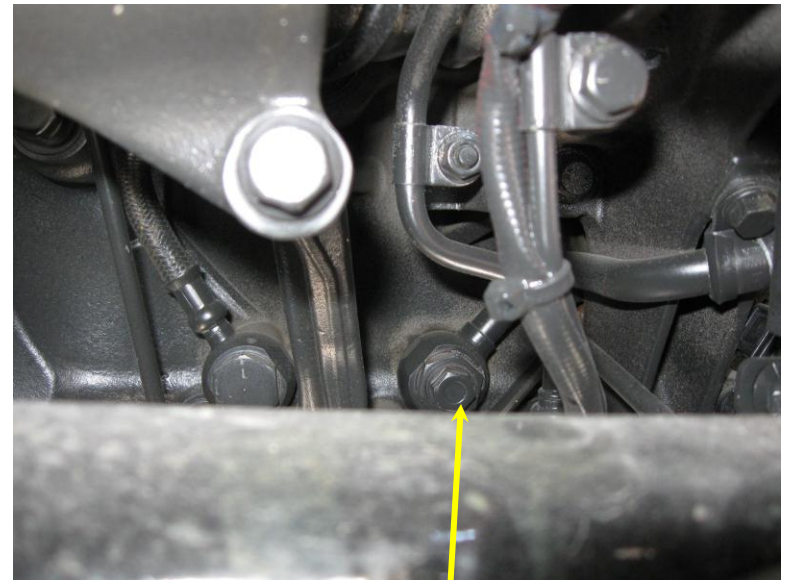


# Supply and Return for Pacar MX



Drain plug used for return is 20MMx1.5. The actual drain plug is in the bottom of the pan.

Both supply and return are on the right side of the engine.



The supply port is 16MMx1.5. This is off the turbo supply. The banjo fitting to the turbo has a plug inserted into the nut that holds the banjo fitting. In the kit I put a 1/4" street elbow 45degree to assure we would not have a problem with the heat from the turbo.