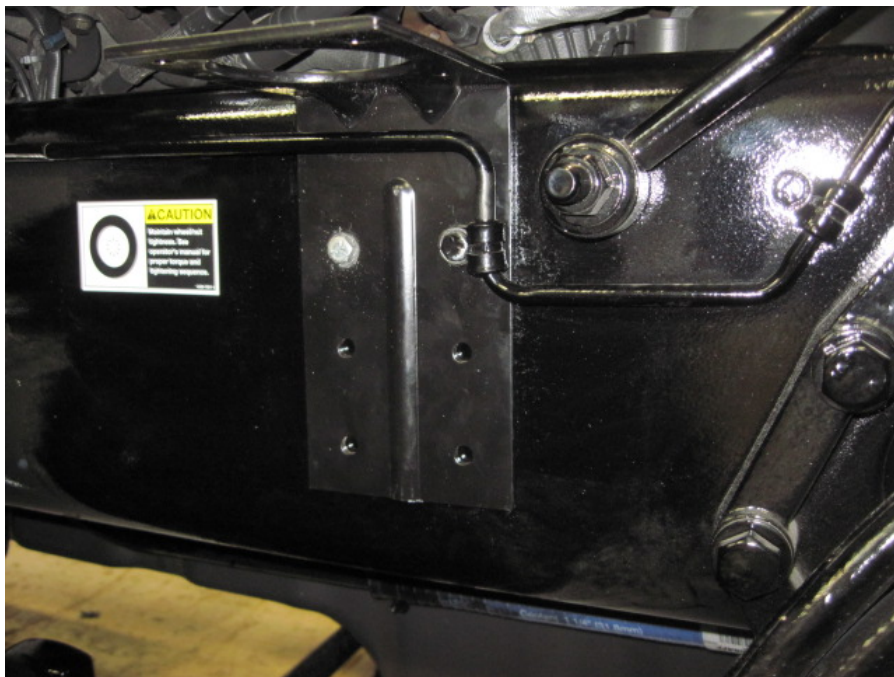


## Peterbilt 365 w/Paccar MX Engine Eco-Pur Mounting

Select this mounting location on the right side frame rail. Note the existing hole in the frame rail where the A/C line hold down clamp was removed. Use a screw driver and slightly bend the line away from the frame rail to make room for the Eco-Pur bracket to fit between the line and the frame.



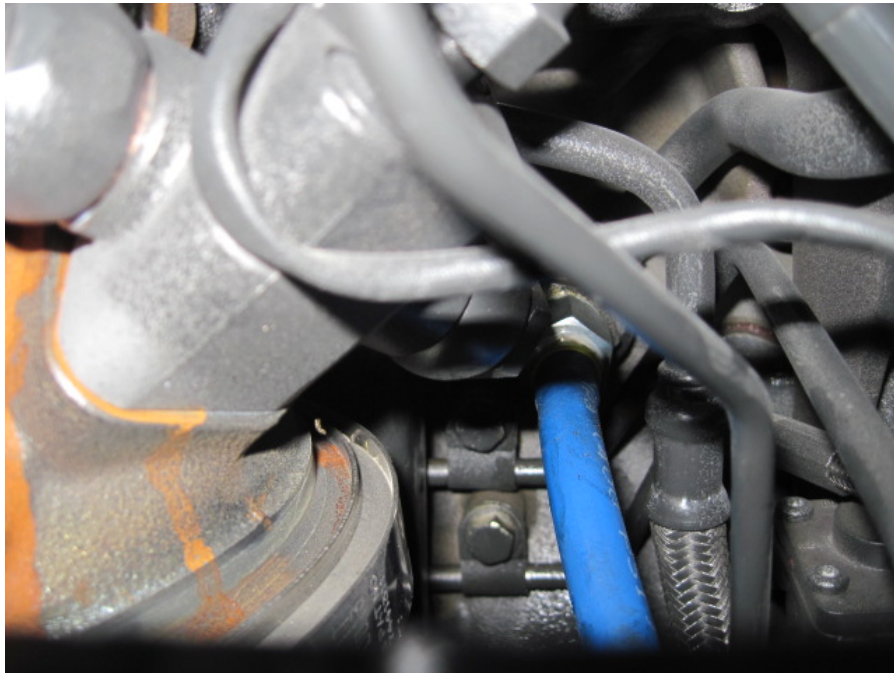
Drill 2 holes in the frame rail using the bracket as a template. You will then reattach the A/C line hold down clamp using one of the mounting bolts, as shown in the next picture.



This shows the Eco-Pur mounted to the bracket and hoses attached.

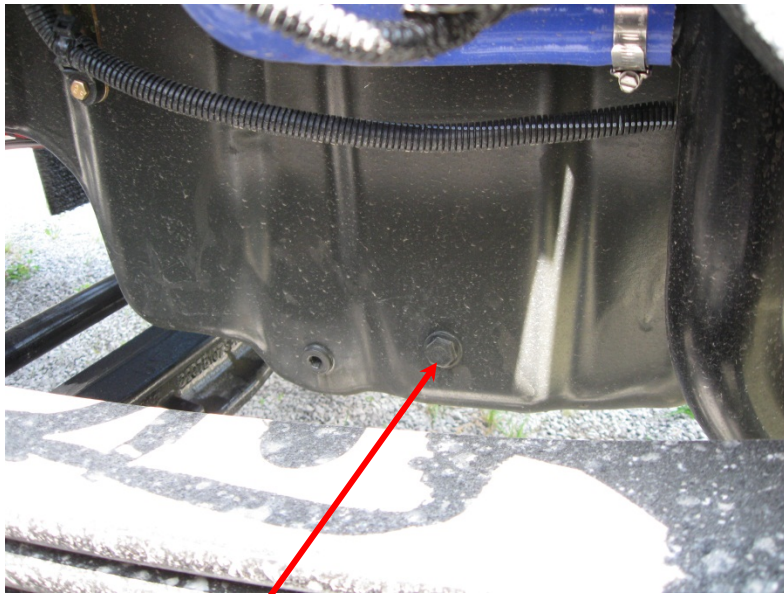
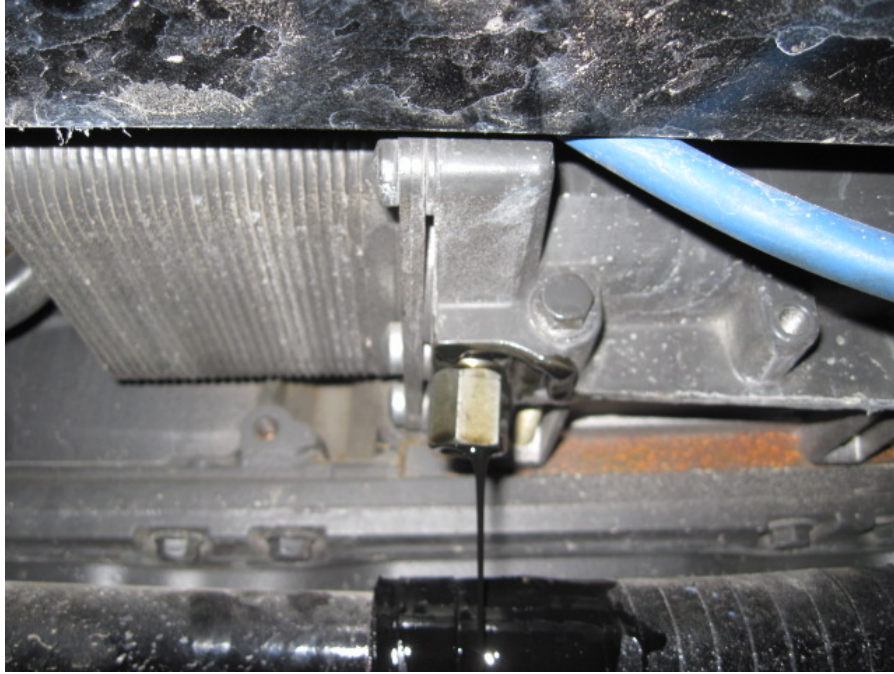


This picture shows the current supply port connection.

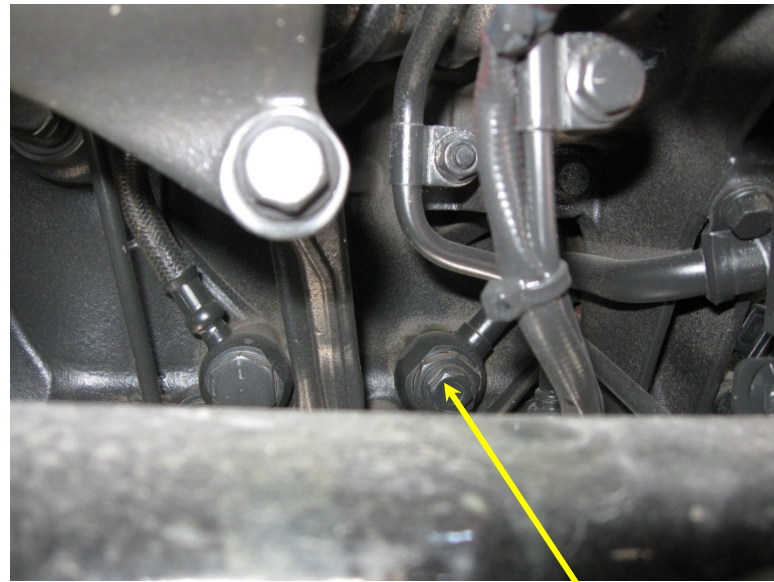




The kit BoM has been changed to include a P-152-A adapter. This will be used in the bottom of the engine oil cooler on the right side of the truck. It is recommended to have fittings and hoses ready to install as there is quite a bit of oil that drains from the plug when removed.



Drain plug used for return is 20 MMx1.5. The actual drain plug is in the bottom of the pan.



The supply port is 16MMx1.5. This is off the turbo supply. The banjo fitting to the turbo has a plug inserted into the nut that holds the banjo fitting. In the kit, a 1/4" 45 degree street elbow is included to assure no problems with the heat from the turbo.

Both supply and return are on the right side of the engine.