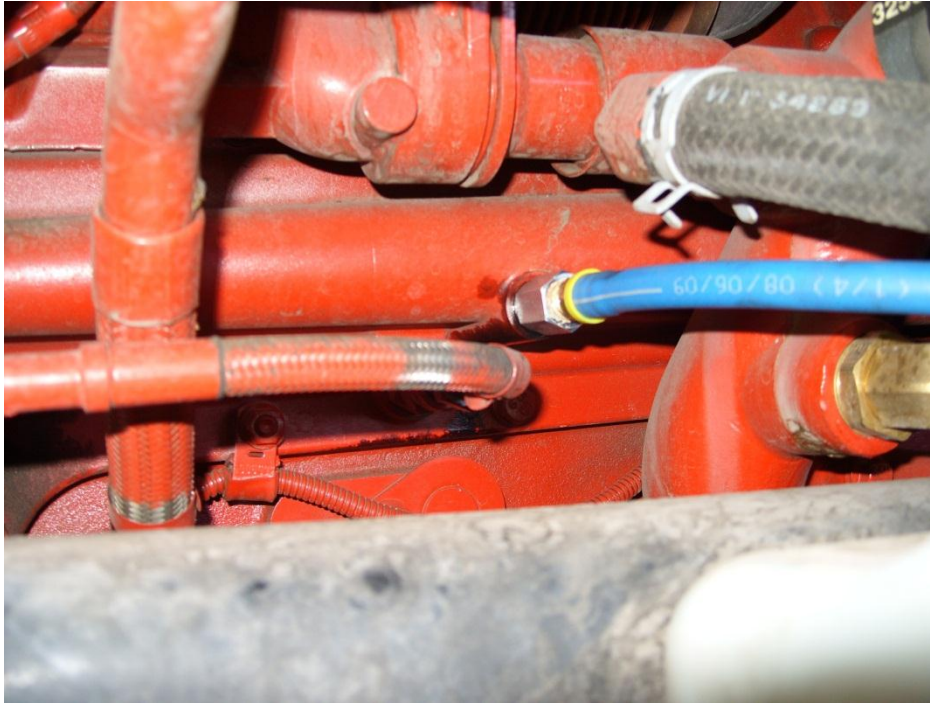
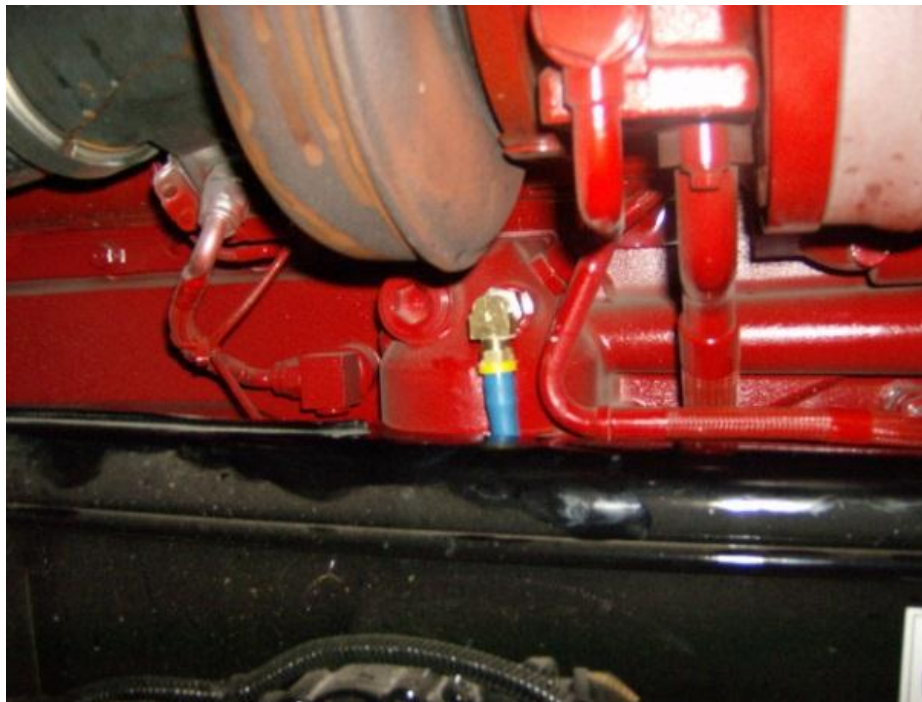


Cummins ISX Port Locations

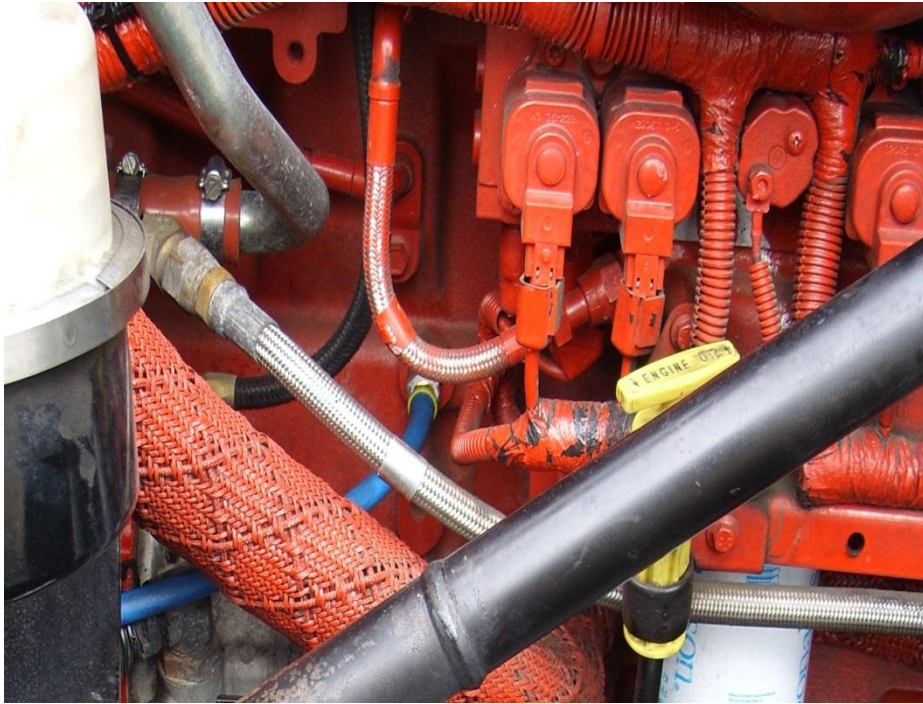
Below is a preferred supply port location on the right side of the engine. The port is actually on the oil cooler.



The port shown below is also on the right side of the engine. This port may be used, but is not preferred due to the proximity of the heated side of the turbo.



The supply port shown below is on the left side of the engine, just behind the air compressor. Use this port if you are mounting on the left side of the truck.



The picture below shows the return port. The drain plug is removed for this connection. There is a drain plug on both sides of the engine. The choice of which one to use should be determined by the mounting location. For example: If you mount on the right side of the truck, use the drain plug on the right side.

